



Thursday 12 June 2014 – Afternoon

AS GCE MATHEMATICS

4728/01 Mechanics 1

QUESTION PAPER

Candidates answer on the Printed Answer Book.

OCR supplied materials:

- Printed Answer Book 4728/01
- List of Formulae (MF1)

Other materials required:

- Scientific or graphical calculator

Duration: 1 hour 30 minutes



INSTRUCTIONS TO CANDIDATES

These instructions are the same on the Printed Answer Book and the Question Paper.

- The Question Paper will be found inside the Printed Answer Book.
- Write your name, centre number and candidate number in the spaces provided on the Printed Answer Book. Please write clearly and in capital letters.
- **Write your answer to each question in the space provided in the Printed Answer Book.** Additional paper may be used if necessary but you must clearly show your candidate number, centre number and question number(s).
- Use black ink. HB pencil may be used for graphs and diagrams only.
- Answer **all** the questions.
- Read each question carefully. Make sure you know what you have to do before starting your answer.
- Do **not** write in the bar codes.
- You are permitted to use a scientific or graphical calculator in this paper.
- Give non-exact numerical answers correct to 3 significant figures unless a different degree of accuracy is specified in the question or is clearly appropriate.
- The acceleration due to gravity is denoted by $g \text{ ms}^{-2}$. Unless otherwise instructed, when a numerical value is needed, use $g = 9.8$.

INFORMATION FOR CANDIDATES

This information is the same on the Printed Answer Book and the Question Paper.

- The number of marks is given in brackets [] at the end of each question or part question on the Question Paper.
- **You are reminded of the need for clear presentation in your answers.**
- The total number of marks for this paper is **72**.
- The Printed Answer Book consists of **12** pages. The Question Paper consists of **8** pages. Any blank pages are indicated.

INSTRUCTION TO EXAMS OFFICER/INVIGILATOR

- Do not send this Question Paper for marking; it should be retained in the centre or recycled. Please contact OCR Copyright should you wish to re-use this document.

2

- 1 A particle P is projected vertically downwards with initial speed 3.5ms^{-1} from a point A which is 5 m above horizontal ground.

(i) Find the speed of P immediately before it strikes the ground. [2]

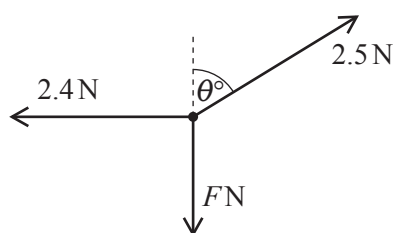
After striking the ground, P rebounds and moves vertically upwards and 0.87 s after leaving the ground P passes through A .

(ii) Calculate the speed of P immediately after it leaves the ground. [3]

It is given that the mass of P is 0.2 kg.

(iii) Calculate the change in the momentum of P as a result of its collision with the ground. [2]

2



A particle rests on a smooth horizontal surface. Three horizontal forces of magnitudes 2.5 N, F N and 2.4 N act on the particle on bearings θ° , 180° and 270° respectively (see diagram). The particle is in equilibrium.

(i) Find θ and F . [4]

The 2.4 N force suddenly ceases to act on the particle, which has mass 0.2 kg.

(ii) Find the magnitude and direction of the acceleration of the particle. [3]

- 3 A particle P travels in a straight line. The velocity of P at time t seconds after it passes through a fixed point A is given by $(0.6t^2 + 3)\text{ms}^{-1}$. Find

(i) the velocity of P when it passes through A , [1]

(ii) the displacement of P from A when $t = 1.5$, [4]

(iii) the velocity of P when it has acceleration 6ms^{-2} . [3]

3

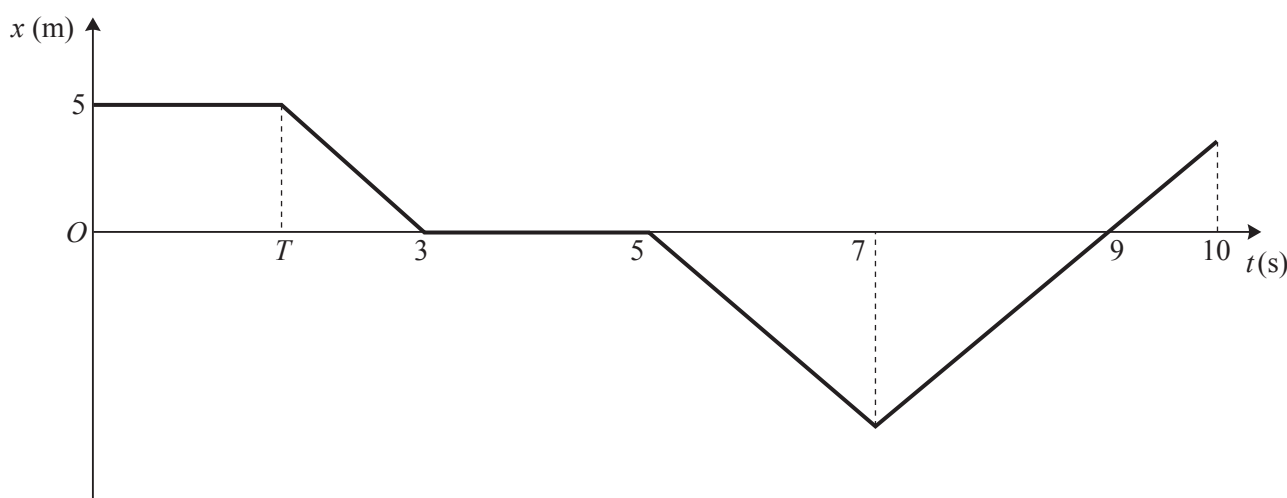
4



Particles P and Q are moving towards each other with constant speeds 4 m s^{-1} and 2 m s^{-1} along the same straight line on a smooth horizontal surface (see diagram). P has mass 0.2 kg and Q has mass 0.3 kg . The two particles collide.

- (i) Show that Q must change its direction of motion in the collision. [3]
- (ii) Given that P and Q move with equal speed after the collision, calculate both possible values for their speed after they collide. [5]

5



A particle P can move in a straight line on a horizontal surface. At time t seconds the displacement of P from a fixed point A on the line is x m. The diagram shows the (t, x) graph for P . In the interval $0 \leq t \leq 10$, either the speed of P is 4 m s^{-1} , or P is at rest.

- (i) Show by calculation that $T = 1.75$. [2]
 - (ii) State the velocity of P when
 - (a) $t = 2$, [1]
 - (b) $t = 8$, [1]
 - (c) $t = 9$. [1]
 - (iii) Calculate the distance travelled by P in the interval $0 \leq t \leq 10$. [3]
- For $t > 10$, the displacement of P from A is given by $x = 20t - t^2 - 96$.
- (iv) Calculate the value of t , where $t > 10$, for which the speed of P is 4 m s^{-1} . [4]

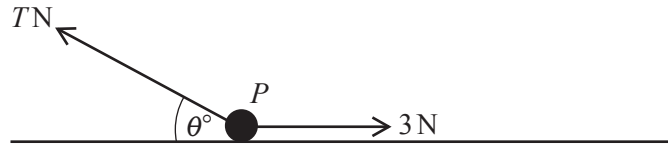
4

- 6 A particle P of weight 8 N rests on a horizontal surface. A horizontal force of magnitude 3 N acts on P , and P is in limiting equilibrium.

(i) Calculate the coefficient of friction between P and the surface. [2]

(ii) Find the magnitude and direction of the contact force exerted by the surface on P . [4]

(iii)



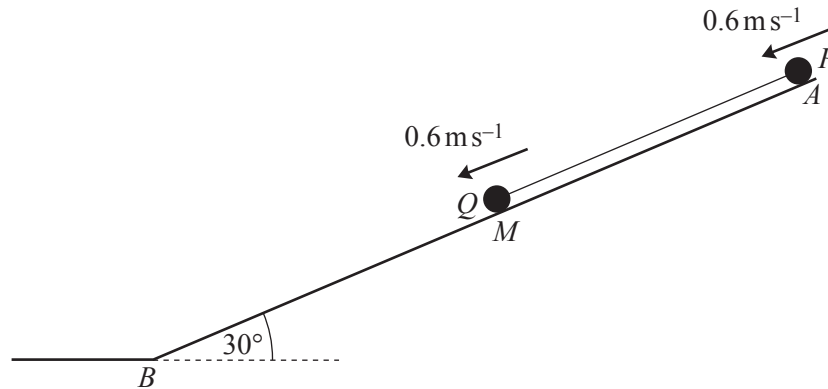
The initial 3 N force continues to act on P in its original direction. An additional force of magnitude $T\text{ N}$, acting in the same vertical plane as the 3 N force, is now applied to P at an angle of θ° above the horizontal (see diagram). P is again in limiting equilibrium.

(a) Given that $\theta = 0$, find T . [2]

(b) Given instead that $\theta = 30$, calculate T . [6]

5

7



A and B are points at the upper and lower ends, respectively, of a line of greatest slope on a plane inclined at 30° to the horizontal. M is the mid-point of AB . Two particles P and Q , joined by a taut light inextensible string, are placed on the plane at A and M respectively. The particles are simultaneously projected with speed 0.6 m s^{-1} down the line of greatest slope (see diagram). The particles move down the plane with acceleration 0.9 m s^{-2} . At the instant 2 s after projection, P is at M and Q is at B . The particle Q subsequently remains at rest at B .

(i) Find the distance AB . [3]

The plane is rough between A and M , but smooth between M and B .

(ii) Calculate the speed of P when it reaches B . [4]

P has mass 0.4 kg and Q has mass 0.3 kg .

(iii) By considering the motion of Q , calculate the tension in the string while both particles are moving down the plane. [3]

(iv) Calculate the coefficient of friction between P and the plane between A and M . [6]

END OF QUESTION PAPER

6

BLANK PAGE

BLANK PAGE

**Copyright Information**

OCR is committed to seeking permission to reproduce all third-party content that it uses in its assessment materials. OCR has attempted to identify and contact all copyright holders whose work is used in this paper. To avoid the issue of disclosure of answer-related information to candidates, all copyright acknowledgements are reproduced in the OCR Copyright Acknowledgements Booklet. This is produced for each series of examinations and is freely available to download from our public website (www.ocr.org.uk) after the live examination series.

If OCR has unwittingly failed to correctly acknowledge or clear any third-party content in this assessment material, OCR will be happy to correct its mistake at the earliest possible opportunity.

For queries or further information please contact the Copyright Team, First Floor, 9 Hills Road, Cambridge CB2 1GE.

OCR is part of the Cambridge Assessment Group; Cambridge Assessment is the brand name of University of Cambridge Local Examinations Syndicate (UCLES), which is itself a department of the University of Cambridge.