

THIS IS A NEW SPECIFICATION



**ADVANCED SUBSIDIARY GCE
BIOLOGY**

Molecules, Biodiversity, Food and Health

F212

Candidates answer on the question paper

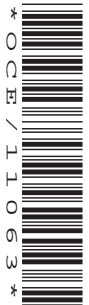
OCR Supplied Materials:
None

Other Materials Required:

- Electronic calculator
- Ruler (cm/mm)

**Monday 1 June 2009
Afternoon**

Duration: 1 hour 45 minutes



Candidate Forename		Candidate Surname	
--------------------	--	-------------------	--

Centre Number						Candidate Number			
---------------	--	--	--	--	--	------------------	--	--	--

INSTRUCTIONS TO CANDIDATES

- Write your name clearly in capital letters, your Centre Number and Candidate Number in the boxes above.
- Use black ink. Pencil may be used for graphs and diagrams only.
- Read each question carefully and make sure that you know what you have to do before starting your answer.
- Answer **all** the questions.
- Do **not** write in the bar codes.
- Write your answer to each question in the space provided, however additional paper may be used if necessary.

INFORMATION FOR CANDIDATES

- The number of marks is given in brackets [] at the end of each question or part question.
- The total number of marks for this paper is **100**.
- You may use an electronic calculator.
- You are advised to show all the steps in any calculations.



Where you see this icon you will be awarded marks for the quality of written communication in your answer.

- This document consists of **20** pages. Any blank pages are indicated.

FOR EXAMINER'S USE		
Qu.	Max.	Mark
1	14	
2	16	
3	18	
4	16	
5	17	
6	19	
TOTAL	100	

3

(ii) Suggest how the data given in Table 1.1 might have been helpful to scientists in working out the structure of DNA.

.....

.....

.....

..... [2]

(c) DNA in the nucleus acts as a template for the production of RNA.

Complete the table below to show **three** ways in which the structure of DNA differs from that of RNA.

feature	DNA	RNA
number of strands		
bases present		
sugar present		

[3]

(d) DNA codes for the structure of polypeptides.

State the role of messenger RNA (mRNA).

.....

.....

.....

.....

..... [2]

[Total: 14]

6

3 In the search for new biofuels, research has been done into the digestion of wood waste by fungi. The cellulase enzymes produced by the fungi break cellulose into sugars. These sugars can then be converted into ethanol, a biofuel.

Fig. 3.1 shows the stages in this digestion process.

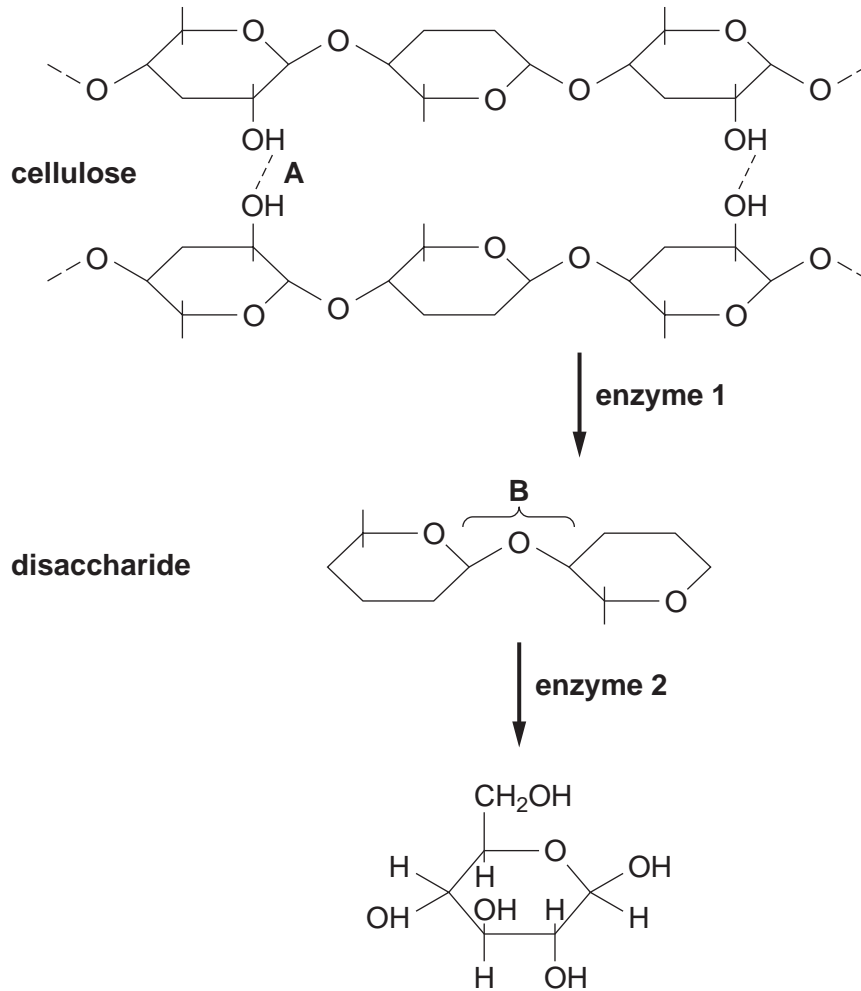


Fig. 3.1

(a) (i) Name bonds **A** and **B** shown in Fig. 3.1.

A

B [2]

(ii) State how bond **B** is broken in the digestion of the disaccharide.

.....
 [1]

(iii) Name the sugar that is the **final** product of this digestion process.

..... [1]

7

(b) Explain why **different** enzymes are involved in each stage of the digestion process.

.....

.....

.....

.....

.....

.....

.....

.....

..... [3]

QUESTION 3 CONTINUES ON PAGE 8

8

(c) Fig. 3.2 shows the effect of changing pH on the rate of activity of **enzyme 2**.

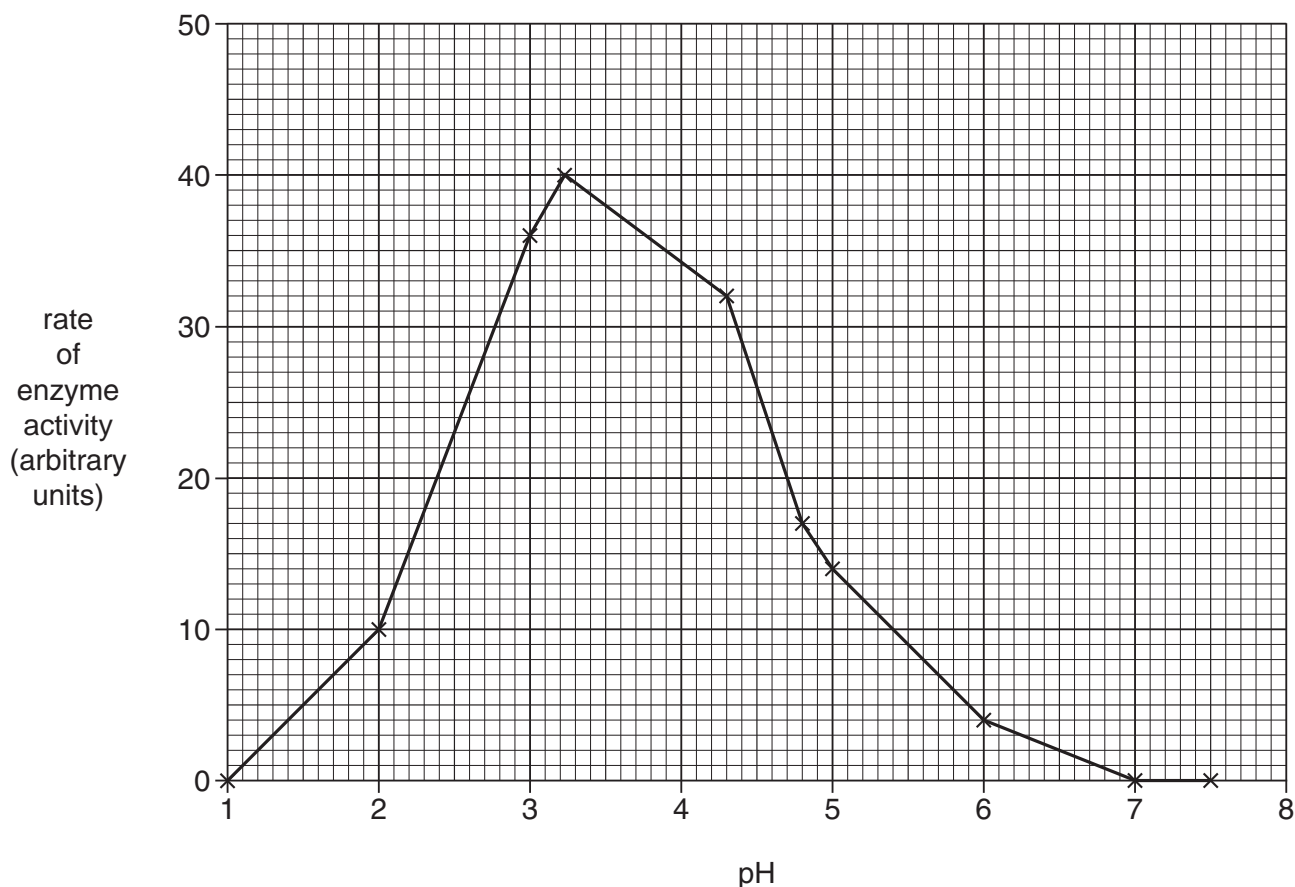


Fig. 3.2

(i) Explain why the activity of **enzyme 2** falls to zero at pH 7.

.....

.....

.....

.....

.....

.....

..... [3]

(ii) State **two** factors that should have been controlled when investigating the effect of pH on the activity of **enzyme 2**.

1

2 [2]

10

4 In India, the population of the white-backed vulture, *Gyps bengalensis*, has fallen by 97% to an estimated 4 000 vultures. This vulture is now considered to be 'critically endangered'. Reasons for the decline in numbers include:

- vultures feed on carcasses including those from farm animals.
- these farm animals may have been treated with a pain killer. This particular pain killer causes kidney failure in the vultures.
- the use of this pain killer is being phased out. However, many farmers continue to use up their stocks of the drug.
- this pain killer is not easily biodegradable and will remain in the environment for many years.

(a) (i) Suggest what is meant by *critically endangered*.

.....
 [1]

(ii) Calculate the **original** population of the white-backed vulture.

Show your working.

Answer = [2]

(b) In an effort to save the white-backed vulture, a captive breeding programme has been set up.

Three centres in India have been built, each housing up to 40 individuals. These vultures have been collected from different areas of the Indian subcontinent.

(i) Explain why the decision was made to conserve the species in captivity (*ex situ*) rather than in the wild (*in situ*).

.....

.....
.....
.....
..... [4]

- (ii) Explain why the white-backed vultures in the captive breeding programme were,
- collected from several different areas
 - housed in three separate centres.

.....
.....
.....
.....
.....
.....
.....
..... [3]

- (c) Outline **three** reasons why the conservation of the white-backed vulture is important.

1

2

3

..... [3]

5 (a) Fig. 5.1 shows a section of a leaf from a pear tree that is infected by the mildew fungus.

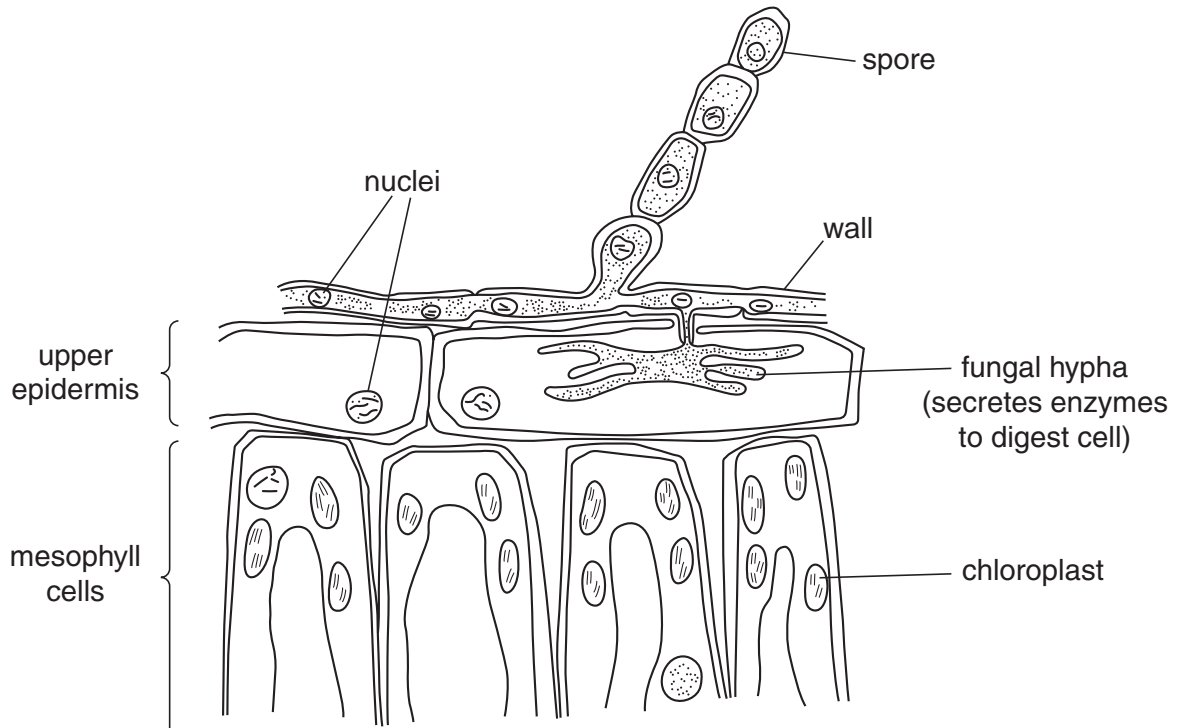


Fig. 5.1

(i) State **one** feature, **shown in Fig. 5.1**, that excludes **both** the pear tree and mildew from the kingdom Prokaryotae.

.....
..... [1]

(ii) State **two** reasons why mildew should be placed in the kingdom Fungi.

.....
.....
.....
..... [2]

(iii) State **two** reasons why the pear tree should be placed in the kingdom Plantae.

.....
.....
.....
..... [2]

- 6 (a) Fig. 6.1 shows a diagram of alveoli in a healthy lung and alveoli in a lung from a person with advanced emphysema.

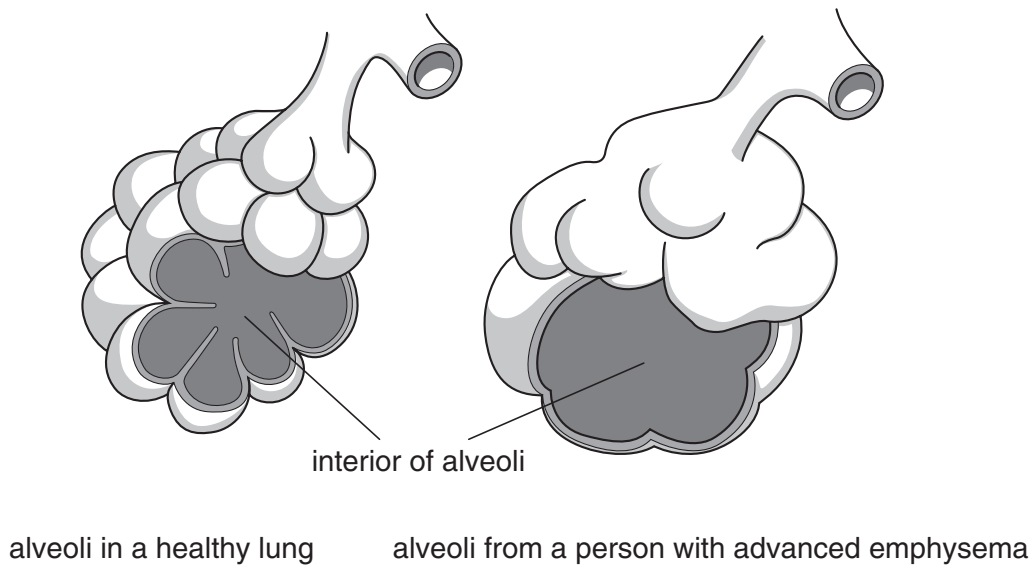


Fig. 6.1

- (i) Describe how smoking could cause changes in alveoli, such as those shown in Fig. 6.1.



In your answer you should make the links between the changes and their causes clear.

.....

.....

.....

.....

.....

.....

.....

.....

.....

.....

.....

.....

.....

.....

.....

.....

.....

.....

.....

.....

.....

.....

.....
.....
.....
.....
..... [6]

(ii) Emphysema is a form of chronic obstructive pulmonary disease (COPD).

Describe **two** signs or symptoms of emphysema.

.....
.....
.....
..... [2]

(iii) Emphysema is described as a chronic disease.

Suggest the meaning of the term *chronic*.

.....
.....
..... [2]

19

(ii) Explain the results obtained for the smoker.

.....
.....
.....
.....
.....
.....
..... [2]

(iii) Suggest three ways of improving the reliability of this investigation.

.....
.....
.....
.....
.....
.....
.....
.....
.....
.....
.....
.....
.....
.....
.....
.....
..... [3]

[Total: 19]

END OF QUESTION PAPER

PLEASE DO NOT WRITE ON THIS PAGE



Copyright Information

OCR is committed to seeking permission to reproduce all third-party content that it uses in its assessment materials. OCR has attempted to identify and contact all copyright holders whose work is used in this paper. To avoid the issue of disclosure of answer-related information to candidates, all copyright acknowledgements are reproduced in the OCR Copyright Acknowledgements Booklet. This is produced for each series of examinations, is given to all schools that receive assessment material and is freely available to download from our public website (www.ocr.org.uk) after the live examination series.

If OCR has unwittingly failed to correctly acknowledge or clear any third-party content in this assessment material, OCR will be happy to correct its mistake at the earliest possible opportunity.

For queries or further information please contact the Copyright Team, First Floor, 9 Hills Road, Cambridge CB2 1PB.

OCR is part of the Cambridge Assessment Group; Cambridge Assessment is the brand name of University of Cambridge Local Examinations Syndicate (UCLES), which is itself a department of the University of Cambridge.