

CAMBRIDGE INTERNATIONAL EXAMINATIONS**GCE Advanced Level****MARK SCHEME for the May/June 2013 series****9701 CHEMISTRY****9701/42**

Paper 4 (A2 Structured Questions), maximum raw mark 100

This mark scheme is published as an aid to teachers and candidates, to indicate the requirements of the examination. It shows the basis on which Examiners were instructed to award marks. It does not indicate the details of the discussions that took place at an Examiners' meeting before marking began, which would have considered the acceptability of alternative answers.

Mark schemes should be read in conjunction with the question paper and the Principal Examiner Report for Teachers.

Cambridge will not enter into discussions about these mark schemes.

Cambridge is publishing the mark schemes for the May/June 2013 series for most IGCSE, GCE Advanced Level and Advanced Subsidiary Level components and some Ordinary Level components.

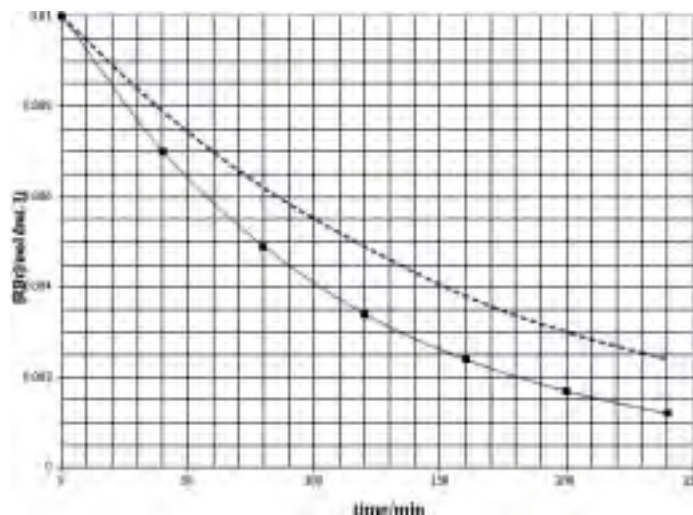
| Page 2 | Mark Scheme | Syllabus | Paper |
|--------|-----------------------------|----------|-------|
| | GCE A LEVEL – May/June 2013 | 9701 | 42 |



(ii) nucleophilic substitution [1]

[2]

(b) (i)



plotting of all points (plotted to within $\frac{1}{2}$ small square) [1]
good line of best fit [1]

(ii) $t_{1/2} = 118 \text{ min}$ or $79 \text{ min} (\pm 5 \text{ min})$
or
construction lines for two half-lives **and** mention that half-life is constant
or
calculate the ratio of two rates at two different concentrations [1]

(iii) either ratio of initial rates (slopes)
or
ratio of $t_{1/2}$
or
ratio of times for [RBr] to fall to the same level: all should be = 1.5 [1]

therefore reaction is first order w.r.t. $[\text{OH}^-]$ [1]

(iv) $\text{rate} = k[\text{RBr}][\text{OH}^-]$ [1]

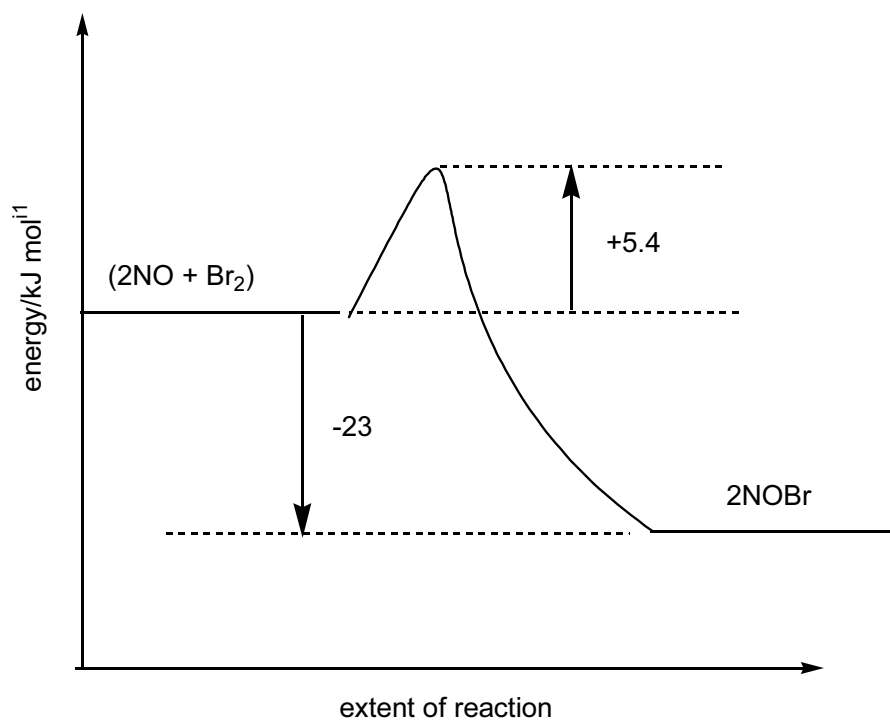
initial rate = $0.01 / 185 = 5.4 \times 10^{-5} \text{ (mol dm}^{-3} \text{ min}^{-1})$ [1]

$k = 5.4 \times 10^{-5} / (0.01 \times 0.1) = 0.054 \text{ (mol}^{-1} \text{ dm}^3 \text{ min}^{-1})$ [1]

[8 max 7]

| | | | |
|--------|-----------------------------|----------|-------|
| Page 3 | Mark Scheme | Syllabus | Paper |
| | GCE A LEVEL – May/June 2013 | 9701 | 42 |

(c)



four marking points: one activation "hump"

2NOBr (not just NOBr)

ΔH labelled correctly (arrow down, or double headed, or just a line)

E_a labelled correctly (arrow up, or double headed, or just a line)

all four points [2]

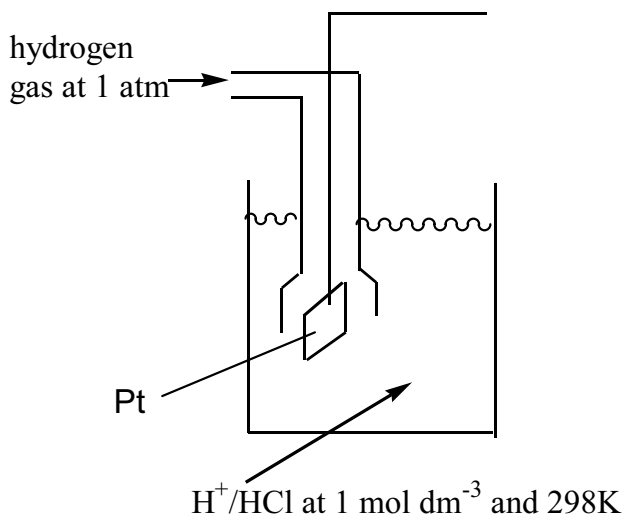
three or two points [1]

[2]

[Total: 11]

| | | | |
|---------------|------------------------------------|-----------------|--------------|
| Page 4 | Mark Scheme | Syllabus | Paper |
| | GCE A LEVEL – May/June 2013 | 9701 | 42 |

2 (a) (i)



H₂(g) going in (i.e. not being produced) [1]
 platinum electrode in contact with solution, with H₂ bubbling over it [1]
 H⁺ or HCl or H₂SO₄ [1]
 solution at 1 mol dm⁻³ (or 0.5 M if H₂SO₄) and T=298 K, p=1 atm [1]

(ii) $E^\circ = 1.33 - (-0.41) = 1.74 \text{ V}$ [1]



(iii) Colour would change from orange [1]
 to green [1]
[8]

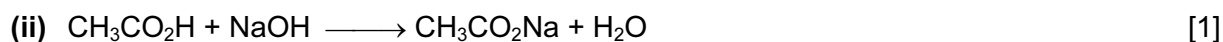
(b) there are two ways of calculating the ratio:
 $\text{p}K_a = -\log_{10}(K_a) = -\log_{10}(1.79 \times 10^{-5}) = 4.747 \text{ (4.75) or } [\text{H}^+] = 10^{-5.5} = 3.16 \times 10^{-6}$ [1]

$\log_{10}([\text{B}] / [\text{A}]) = \text{pH} - \text{p}K_a = 0.753 \text{ (0.75) or } [\text{salt}] / [\text{acid}] = K_a / [\text{H}^+]$ [1]

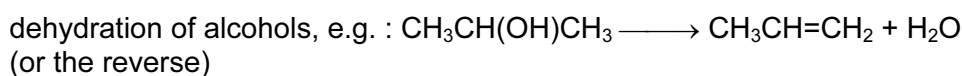
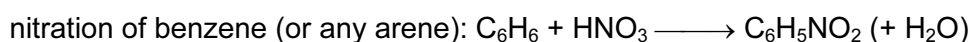
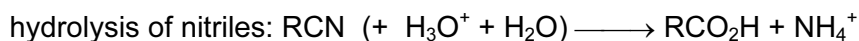
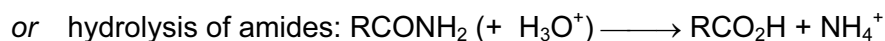
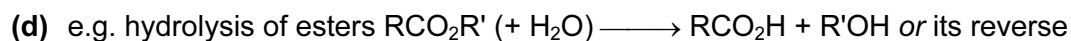
$\therefore [\text{B}] / [\text{A}] = 10^{0.753} = 5.66$
 or $1.79 \times 10^{-5} / 3.16 \times 10^{-6} = 5.66$
 (or $[\text{A}] / [\text{B}] = 0.177$) [1]
 (correct ratio = [3] marks)

since $B + A = 100, \therefore (100-A) / A = 5.66 \Rightarrow$
 $\frac{\text{vol of acid} = 15 \text{ cm}^3}{\text{vol of salt} = 85 \text{ cm}^3}$ [1]
[4]

| Page 5 | Mark Scheme | Syllabus | Paper |
|--------|-----------------------------|----------|-------|
| | GCE A LEVEL – May/June 2013 | 9701 | 42 |



[2]



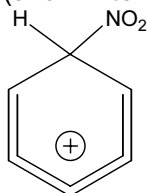
[3]

[Total: 17]



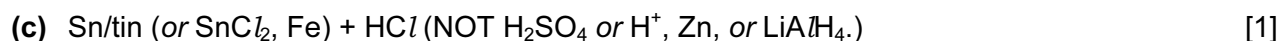
[3]

(b) (allow intermediate from methylbenzene)



[1]

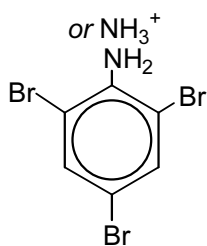
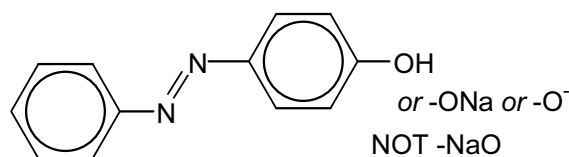
[1]



[1]

| Page 6 | Mark Scheme | Syllabus | Paper |
|--------|-----------------------------|----------|-------|
| | GCE A LEVEL – May/June 2013 | 9701 | 42 |

(d) (i)

**A****B**

[1] + [1]

(ii) $\text{NaNO}_2 + \text{HCl}$ or H_2SO_4 or H^+ or HNO_2

[1]

 $T \leq 10^\circ\text{C}$

[1]

[4 max 3]

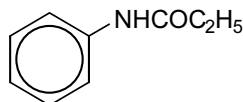
(e) (i) amide

[1]

(ii) $M_r = 108 + 11 + 14 + 16 = 149$ $\%N = (14 \times 100) / 149 = 9.4\%$

[1]

(iii)



[1]

[3]**[Total: 11]**

4. (a) (i) Many electrons of similar energy in a valence-shell orbital

or

successive ionisation energies rise steadily (no big jumps)

or

ability to form bonds with ligands can stabilise very low or very high oxidation states

or

4s + 3d orbitals/shells/energy levels have similar / same energies

[1]

(ii) VO_2^+ : +5 CrF_6^{2-} : +4 MnO_4^{2-} : +6

[3 × 1]

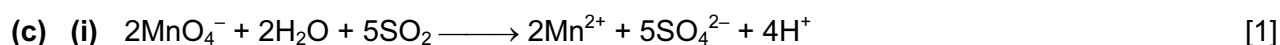
[4]

| | | | |
|---------------|------------------------------------|-----------------|--------------|
| Page 7 | Mark Scheme | Syllabus | Paper |
| | GCE A LEVEL – May/June 2013 | 9701 | 42 |

(b)

- (colour due to) absorption of light/photons/frequencies/wavelengths
or
colour seen is complement of colour absorbed.
- d-orbitals/d-subshell split (by ligand field)
- (when photon is absorbed), electron is promoted *or* moves (from lower) to higher (d-)orbital
- energy difference/gap *or* ΔE *or* splitting corresponds to photon/frequency/wavelength in visible region
- in s-block elements the energy gap is too large (to be able to absorb visible light)

[any four 4 × 1]

[4]

(ii) solution will go from purple [1]

to colourless [1]

[3]

(d) (pale) blue solution [1]

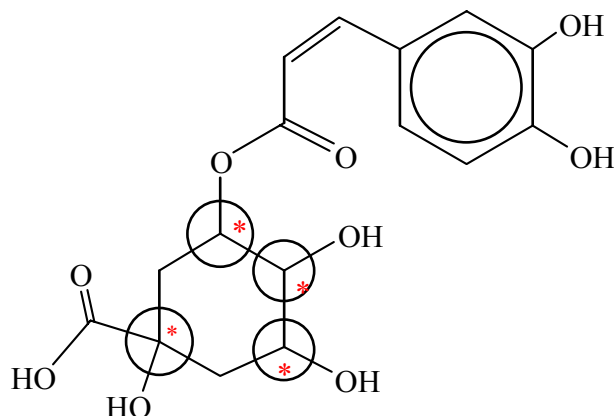
gives a (pale) blue ppt. [1]

which re-dissolves, *or* forms a solution, which is dark/deep blue *or* purple [1]

[3]**[Total: 14]**

| Page 8 | Mark Scheme | Syllabus | Paper |
|--------|-----------------------------|----------|-------|
| | GCE A LEVEL – May/June 2013 | 9701 | 42 |

5 (a) (i)



two or three centres correctly identified [1]
four centres correctly identified [2]

(ii) $C_{16}H_{18}O_9$ [1]

(iii) 3 moles of H_2 [1]

(iv) in cold: 3 moles of NaOH [1]

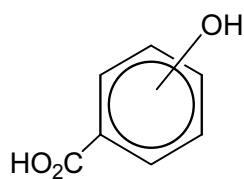
on heating: 4 moles of NaOH [1]
[6]

(b) (i) hydrolysis [1]

(ii) alkene or C=C [1]

(iii) with $Na_2CO_3(aq)$: carboxylic acid [1]
with $Br_2(aq)$: phenol [1]

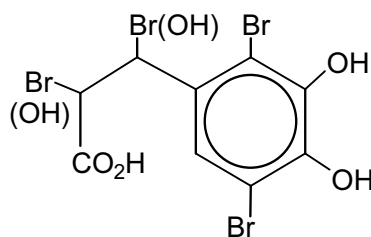
(iv)



F

(OH can be at the 3, 4, or 5 positions, but not the 2 or 6 positions)

[1]



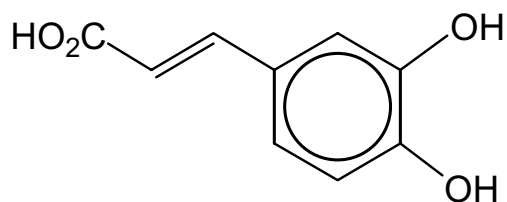
G (ring subst. allow 2 or 3 Br in ring) [1]

(addition to C=C: allow one of the aliphatic Br to be OH, but not both) [1]

(v) geometrical or cis-trans or E-Z [1]

| | | | |
|--------|-----------------------------|----------|-------|
| Page 9 | Mark Scheme | Syllabus | Paper |
| | GCE A LEVEL – May/June 2013 | 9701 | 42 |

(vi)

skeletal or structural [1]
[9 max 8](c) $M_r(\mathbf{E}) = 180$, so $0.1 \text{ g} = 1/1800$ (5.56×10^{-4}) mol [1] 3 mol NaOH react with 1 mol of E , so $n(\text{NaOH}) = 3/1800 = 1/600 \text{ mol} = 1.67 \times 10^{-3} \text{ mol}$ [1]volume of $0.1 \text{ M NaOH} = 1000/(600 \times 0.1) = 16.7 \text{ cm}^3$ [1]

[3]

[Total: 17]

| | | | |
|----------------|------------------------------------|-----------------|--------------|
| Page 10 | Mark Scheme | Syllabus | Paper |
| | GCE A LEVEL – May/June 2013 | 9701 | 42 |

6 (a)

| substance | protein synthesis | formation of DNA |
|-----------|-------------------|------------------|
| cysteine | ✓ | |
| cytosine | | ✓ |
| glutamine | ✓ | |
| guanine | | ✓ |

[3]

[3]**(b) (i)** Hydrogen bonding

[1]

Between bases *or* between A, T, C and G (all four needed)

[1]

(ii) Bonds are (relatively) weak *or* easily broken

[1]

This enables strands to separate *or* DNA to unzip/unwind/unravel.

[1]

[4]**(c)** changes / mutations in DNA

- by the addition / insertion / deletion / substitution / replacement of a base
- adds / deletes / replaces an amino acid *or* changes the amino acid sequence
- this causes a loss of function *or* changes the shape / tertiary structure of the protein

any three points [3]

[3]**[Total: 10]**

| | | | |
|---------|-----------------------------|----------|-------|
| Page 11 | Mark Scheme | Syllabus | Paper |
| | GCE A LEVEL – May/June 2013 | 9701 | 42 |

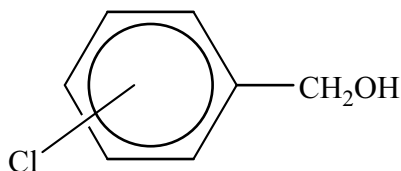
7. (a) (i) $\frac{43.3}{3.35} = \frac{100}{1.1 \times n}$

$$n = \frac{100 \times 3.35}{43.3 \times 1.1} = 7.03 = 7 \text{ (calculation must be shown)} \quad [1]$$

(ii) The M and M+2 peaks are in the ratio 3 : 1 hence the halogen is chlorine/Cl [1]

(iii) L contains 7 hydrogen atoms *or* there are 3 types/environments of proton/H [1]

(iv) The multiplet with 4 hydrogens *or* peaks at δ 7.3 suggests a benzene ring
 The singlet with 2 hydrogens *or* peak at δ 4.7 suggests a $-\text{CH}_2-$ group
 The singlet with 1 hydrogen *or* peak at δ 2.3 suggests an $-\text{OH}$ group
or reaction with Na suggests an OH group
 OH must be an alcohol, not a phenol (due to its δ value)
 Since L also contains 7 carbon atoms and chlorine, this accounts for 126 of the 142 mass, the remaining atom must be oxygen
 Thus L is



(allow the 2-, 3- or 4- isomer)

[6]
[9 max 7]

(b) (i) we expect propene to have a CH_3 peak *or* a peak at m/e 15
or cyclopropane would have fewer peaks [1]

(ii) cyclopropane would have 1 peak (ignore splitting)
 propene would have 2 (*or* 3, *or* 4) peaks (ignore splitting)
or propene would have peaks in the δ 4.5-6.0 (alkene) region
 no splitting of cyclopropane peak
 (any two points) [2]

[3]
[Total: 10]

| Page 12 | Mark Scheme | Syllabus | Paper |
|---------|-----------------------------|----------|-------|
| | GCE A LEVEL – May/June 2013 | 9701 | 42 |

- 8 (a) (i) $\text{CH}_2 = \text{CH}-\text{CO}_2\text{H}$ or $\text{CH}_2 = \text{CH}-\text{CO}_2\text{R}$ or $\text{CH}_2 = \text{CH}-\text{COCl}$ [2]
- (ii) addition (polymerisation) [1]
- (iii) $\text{C}(\text{CH}_2\text{OH})_4$ [1]
- (iv) water [1]
- [5]
- (b) (water is bonded to the polymer by) hydrogen bonding [1]
hydrogen bonds are weak or easily broken [1]
[2]
- (c) (i) cross-linking causes no reduction in the number of $-\text{OH}$ groups
or cross-linking molecules also have $-\text{OH}$ groups [1]
- (ii) property e.g. becomes harder / more rigid / less flexible / stronger / higher melting
point. [1]
because the chains are more strongly / tightly held [1]
[3]
- [Total: 10]